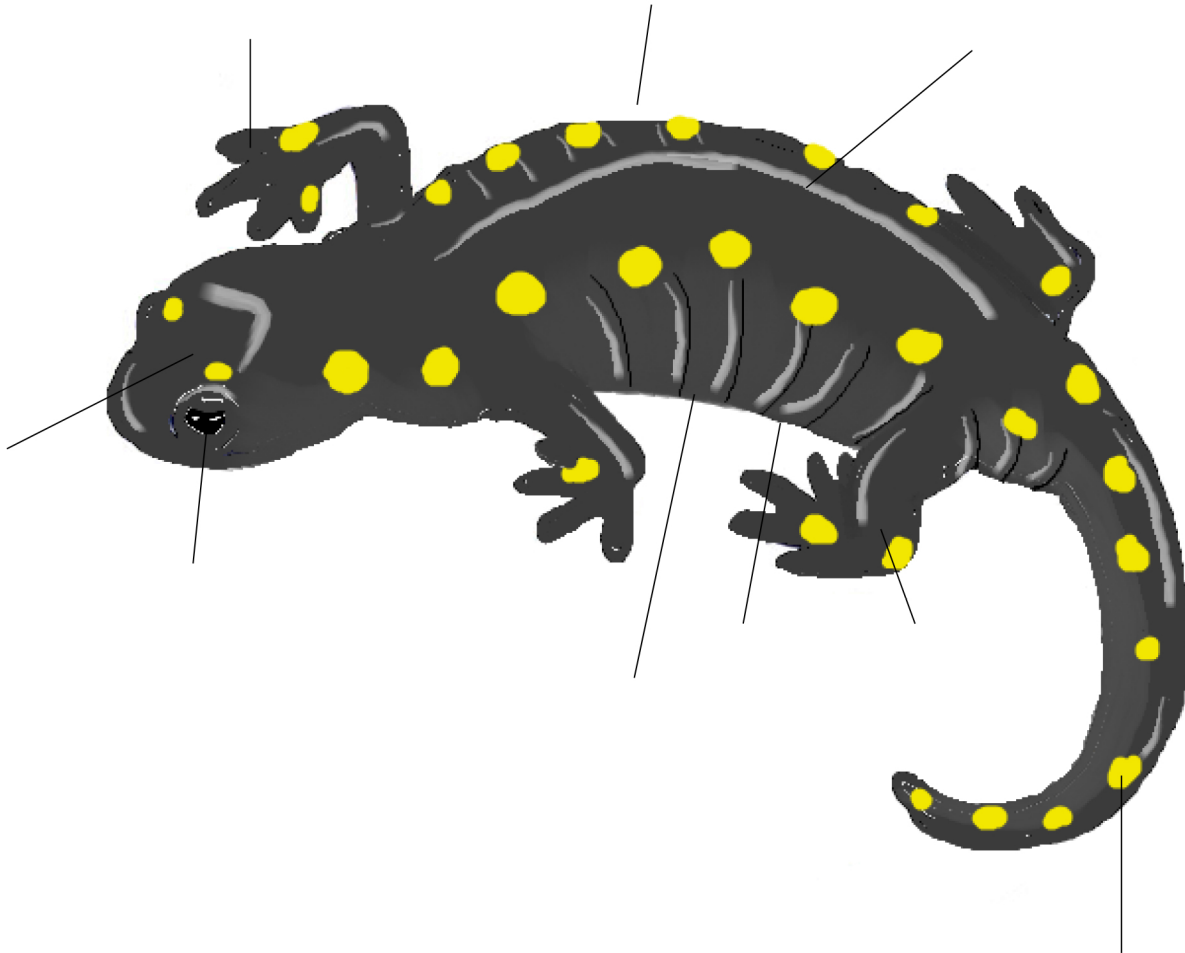




Anatomy of a Salamander

Who do we have here? A Yellow-Spotted Salamander, of course! Salamanders are *amphibians*. This means they live part of their lives in the water, and part on land! See if you can identify all of the body parts of this salamander!





Anatomy of a Salamander Definitions

Use these definitions to help you label the salamander.

Back: The top portion of a salamander. It may be covered in spots or stripes

Belly: The underside of a salamander, closest to the ground

Costal Grooves: Groove between the ridge of the rib along the side of the salamander. Increases the surface area of the skin for water absorption

Eye: Two eyes adapted for night vision

Head: Front of a salamander that has its eyes, mouth, and brain

Legs: Four short legs for walking

Tail: Salamanders have a long slender tail. Salamanders have a special ability to regrow their tails if it has been bitten off by a predator!

Toes: Salamanders have four toes in the front and five toes in the back

Trunk: The main body of a salamander



Anatomy of a Salamander Answer Key

How did you do? Check your answers using this answer key!

